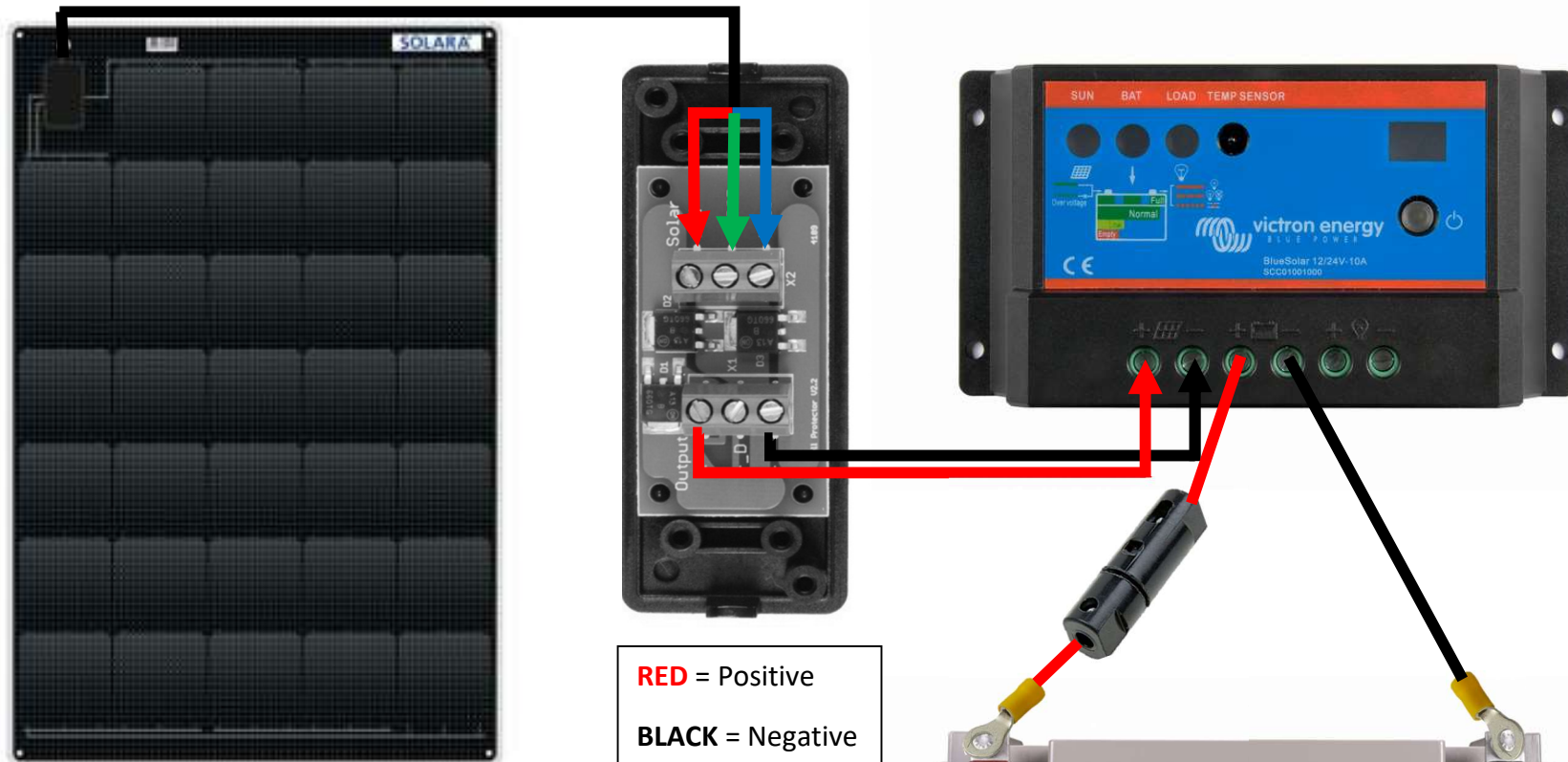


Solara Power M Series 105Wp Semi-Flexible Panel Marine Kit Wiring Diagram



RED = Positive
BLACK = Negative

Connect the battery cables first, then the solar.

The remaining terminals on the controller are for a programmable load output. This has a maximum output of 10 amps, follow the manual for the different pre-sets.

Take power directly from the battery if more than 10 amps is required.

If you require battery protection of loads larger than 10 amps, then contact us about this.

This diagram serves as an example to show how the equipment should be wired together; manufacturer's instructions should be read prior to installation. Select Solar are unable to accept any responsibility for damage caused by cross polarity. If there is any doubt, please contact us before connecting any cables.

The Cell Protector is included with all SOLARA panels (41 watt and larger). This is used to combine the 3-core cable coming from the panel and then provide a 2-cable output. This must be used in all installations; the cell protector is not suitable for outdoors so must be installed indoors.

